

A SYSMECH - MAIS JOINT VENTURE

Mais India

The health care specialist



Healing the World with best Medical Products™





“**Mais India Medical Devices Pvt. Ltd.** is an alliance between the multi-million dollar global leader '**Mais Medical**' and the world-wide leader in medical machine manufacturing '**Sysmech Enterprises**'. The motto of this alliance is to ensure that single use medical products reach the globe at affordable prices but at an unbeatable quality conforming to international standards. The company is one of the leading names in the healthcare sector. We use state-of-the art technology with ultra modern manufacturing facilities to manufacture world-class quality products. Our strength lies in our team of enormously experienced (over 3 decades) engineers and trained technocrats totally committed to continuous innovation and cutting edge research.

We are proud to be affiliated with SGS. We comply to the related National and International Standards like India - Medical Devices Regulation (MDR) 2017, EN ISO 13485:2016, MDD 93/42/EEC as amended, at every stage of production. We have class 10,000 clean rooms for the product assembly and blister packing & class 1,00,000 clean room for injection moulding. We also have an in-house Analytical laboratory for the in process and finished products testing of our entire range of products. We are among the few companies having **fully automatic vision system** for the final assembly.

Vision

“We seek to ensure that the benefits of best modern technology in healthcare are available to all at an affordable price.”

Mission

“To become a corporation known for its instrumental role in welfare of mankind by producing high quality medical products at lower prices using cutting edge technology and incessant research”

Research & Development

We do intensive in-house research and development for all our products and processes & always keep working on the invention of special production machines and processes to enhance the quality of production and products. Constant improvement in the existing designs by using the latest know-how along with the help of intense investments in trials is used by our intellectual capital in designs and teams of highly capable & experienced staff. We always focus on the addition of value to the existing designs our R&D department.

Products Range

Infusion Therapy

Safety I.V. Cannula
I.V. Cannula
Three Way stop cock with Extension Tube
Three Way Stop Cock Click 45°
Three Way Stop Cock
I.V. Infusion Set with Airvent / without Airvent
I.V. Infusion Set with Micro Drip
Premium infusion set with new features and enhanced quality
I.V. Set with Flow Regulator
Blood Transfusion Set with Airvent / without Airvent
Measured Volume Fluid Administration Set
Multi lumen Extension Sets
With Needle Free Connector / Injection Stopper
I.V. Flow Regulator Extension Set
Disposable Infusion Pump / Elastomeric Infusion Pump
High Pressure Extension Line with UV Protection
Extension Line Low or High Pressure (Plain & Spiral)

Anaesthesia & Respiratory Care

Oxygen Mask
Twin Bore Nasal Oxygen Set
Nebuliser Mask
Catheter Mount
HME Filter
Spinal Needle
Breathing Circuit
MaiSpirometer
Endotracheal Tube (Plain/Cuffed)
Reinforced Endotracheal Tube (Plain/Cuffed)

Endoscopic

Ligation Clips

Surgery & Drainage System

Yankauer Suction Set
Skin Stapler

Urology Nephrology

Foley's Catheter

Renal Care

Hemodialysis Catheter

“Quality is not an act, it is a habit”



**Zero Manual
Error**

**Minimal
Bio-Burden**

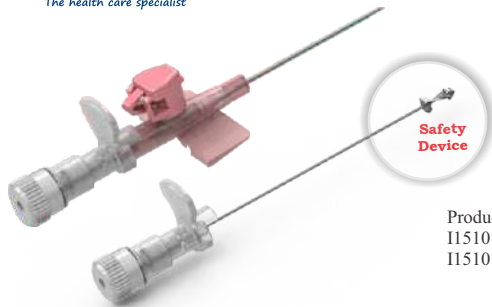
**Consistent Quality
at all Levels**

“**Mais India Medical Devices Pvt. Ltd.** is among the few medical disposable companies to have **automatic computerised vision inspection system** set up for entire manufacturing facility. Each finished device is inspected against a master by high resolution cameras. This along with our fully automatic production assembly lines and well equipped state-of-the-art R & D capability gives us the confidence to guarantee an unbeatable quality.”

- Needle Orientation
- Needle Tip Damage
- Trim Distance
- Catheter Tipping Quality
- Needle and Catheter Length Variation
- Needle Burr

Technical Specifications

Size	Colour Code	Ext. Dia. mm	Catheter Length mm	Flow Rate ml./min
14G	Orange	2.1	45	300
16G	Grey	1.7	45	200
17G	White	1.5	45	140
18G	Green	1.3	45	95
18G	Green	1.3	32	95
20G	Pink	1.1	32	62
22G	Blue	0.9	25	33
24G	Yellow	0.7	19	20
26G	Violet	0.6	19	15



Product Code :
I1510107XX* (FEP R/O, MGP)
I1510106XX* (PUR R/O, MGP)



Product Code :
I1520211XX* (FEP R/O, MGP)
I1520205XX* (PUR R/O, MGP)

MaisSafe Clip™

Safety I.V. Cannula with Injection Port & Wings

- Added safety feature for prevention of needle stick injury
- Irreversible activation of safety mechanism
- Colour wings body
- Available in PUR/FEP variants
- Available in Tyvek/MGP packing
- Sizes: 14G to 26G

Maiswin Safe Clip™

Safety I.V. Cannula without Injection Port & Wings

- Added safety feature for prevention of needle stick injury
- Irreversible activation of safety mechanism
- Colour body
- Available in PUR/FEP variants
- Available in Tyvek/MGP packing
- Sizes: 14G to 26G



Product Code :
I1610203XX* (FEP R/O, MGP)
I1610201XX* (PUR R/O, MGP)



Product Code :
I1630309XX* (FEP R/O, MGP)
I1630305XX* (PUR R/O, MGP)

MaisProtect™

Safety I.V. Cannula with Injection Port & Wings

- Added safety feature for prevention of needle stick injury
- Irreversible activation of safety mechanism
- Colour wings body
- Available in PUR/FEP variants
- Available in Tyvek/MGP packing
- Sizes: 14G to 26G

Maiswin Protect™

Safety I.V. Cannula without Injection Port & Wings

- Added safety feature for prevention of needle stick injury
- Irreversible activation of safety mechanism
- Colour body
- Available in PUR/FEP variants
- Available in Tyvek/MGP packing
- Sizes: 14G to 26G



Product Code:
I1070101XX* (FEP R/O, MGP)
I1070103XX* (FEP R/O, Tyvek)
I1070104XX* (PUR R/O, Tyvek)
I1070105XX* (PUR R/O, MGP)



Product Code:
I1060309XX* (FEP R/O, MGP)
I1060311XX* (FEP R/O, Tyvek)
I1060312XX* (PUR R/O, Tyvek)
I1060310XX* (PUR R/O, MGP)

MaisSafe™

Safety I.V. Cannula with Injection Port & Wings

- Added safety feature for prevention of needle stick injury
- Irreversible activation of safety mechanism
- Colour wings body
- Available in PUR/FEP variants
- Available in Tyvek/MGP packing
- Sizes: 14G to 26G

Maiswin Safe™

Safety I.V. Cannula without Injection Port & Wings

- Added safety feature for prevention of needle stick injury
- Irreversible activation of safety mechanism
- Colour body
- Available in PUR/FEP variants
- Available in Tyvek/MGP packing
- Sizes: 14G to 26G

Infusion Therapy



MaiSafe Valve™

BLOOD CONTROL SAFETY I.V. CANNULA without Injection Port & Wings

- Added safety feature for prevention of needle stick injury
- Irreversible activation of safety mechanism
- Colour body
- Available in PUR/FEP variants
- Available in MGP packing
- Sizes: 14G to 26G

Maiscan Safe™ Valve

BLOOD CONTROL SAFETY I.V. CANNULA without Injection Port & with Wings

- Added safety feature for prevention of needle stick injury
- Irreversible activation of safety mechanism
- Colour wings body
- Available in PUR/FEP variants
- Available in MGP packing
- Sizes: 14G to 26G



Maisflon Premium™

I.V. Cannula with Flip Top Injection Port Cap & Color Wings

- Injection port with one way silicon injection valve
- 6% luer taper for compatibility with all standard devices
- Available in PUR/FEP variants
- Available in Tyvek/MGP packing
- Sizes: 14G to 26G

Surgialpha™

I.V. Cannula with Injection Port & Wings

- Injection port with one way silicon injection valve
- 6% luer taper for compatibility with all standard devices
- Available in PUR/FEP variants
- Available in Tyvek/MGP packing
- Sizes: 14G to 26G



Maiswin™

I.V. Cannula without Injection Port & Wings

- Colour body
- Main body specially designed with projection for low point gap to facilitate better maneuvering
- Available in PUR/FEP variants
- Available in Tyvek/MGP packing
- Sizes : 14G to 26G

Maispen™

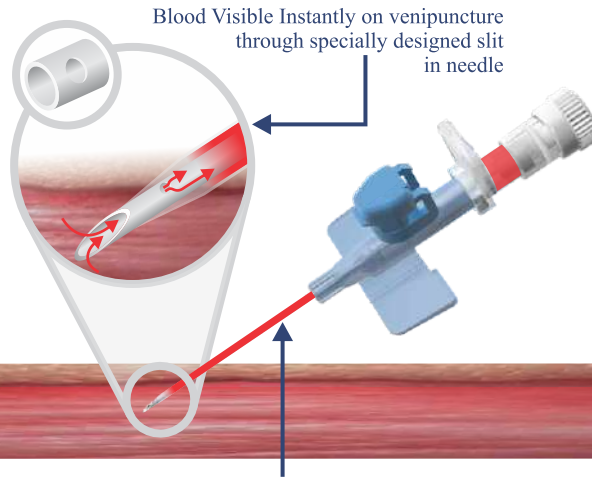
I.V. Cannula without Injection Port & Wings (Pen Type)

- Colour body & Cap
- Main body specially designed with projection for low point gap to facilitate better maneuvering
- Available in PUR/FEP variants
- Available in Tyvek/MGP packing
- Sizes : 14G to 26G

Maisflex™

I.V. Cannula with Injection Port & Wings (Instant Flashback)

- Instant conformation of successful venipuncture
- Quick visualization blood flow along catheter body, enhance clinician's ability to successfully access the vein
- Flip top cap injection port with one way silicon injection valve
- 6% luer taper for compatibility with all standard devices
- Available in PUR/FEP variants
- Available in Tyvek/MGP packing
- Sizes: 14G to 26G



Product Code :
101304XXXX*

Instant Visualization Of Blood Flow Through slit in Needle
Confirms Successful Venipuncture



Product Code :
101206XXXX*



Product Code :
10310101XX

Maiscan™

I.V. Cannula without Injection Port & With Wings

- Colour wing body
- Main body specially designed with projection for low point gap to facilitate better maneuvering
- Available in PUR/FEP variants
- Available in Tyvek/MGP packing
- Sizes : 14G to 26G



*XX= 01-Blue
02-Red
03-White

Product Code :
10281101XX*
10281201XX* (Lipid Resistant)

Maisway Extn.™

Three Way Stop Cock with Extension Tube

- Three Way Stop Cock at one end & male luer lock at the other end of extension tube.
- High quality kink resistant tube that provides smooth flow. Universal 6% taper to make it compatible with wide range of other medical equipment.
- Arrow symbols to indicate the direction of flow.
- Minimum priming volume required for correct drug administration.
- The integrated 3-Way stop cock offers multiple infusion line.
- Tube length available (cm): 10, 25, 50, 80, 100, 150, 200



*XX= 01-Blue
02-Red
03-White

Product Code :
10210101XX*
10220101XX* (Lipid Resistant)

Maisway Click™

Three Way Stop Cock Click 45°

- Can Sustain Pressure up to 4.5 bar (65 psi)
- Smooth movement
- Minimum priming volume for accurate drug administration
- Highly transparent (free from blue tinge)
- Rotating male luer and two female luer connectors
- Arrow indication on the handle to indicate the direction of flow
- Connection meets 6% taper to ensure leakage free fitment

Maisway™

Three Way Stop Cock

- Pressure handling capability : up to 10 bar
- Universal 6% taper to make it compatible with wide range of other medical equipment.
- Arrow indication mark on handle to indicate the direction of flow.
- Design with minimum priming volume to ensure correct drug administration.
- Available in Lipid Resistant / Non Lipid resistant.
- Available : Blue, Red & White

Infusion Therapy



Latex Free

Further option available:



Product Code :
I040010100 (Vented)
I041010100 (Non Vented)

Maisfusion Set™

I.V. Administration Set

- Sharp piercing spike for easy insertion in I.V. container.
- Specially designed cylindrical collapsible drip chamber to visualize the flow rate.
- Disc type fluid filter at the bottom of chamber filters any particulate matter in the I.V. fluid.
- 150 cm long super smooth kink resistant tubing with efficient roller controller for accurate, unrestricted flow.
- Approximately 20 drops/ml.
- Also available in DEHP Free materials.



Latex Free

Further option available:



Product Code :
I040030100 (Vented)
I041030100 (Non Vented)

Maisfusion Set™ Micro

I.V. Administration Set with Micro Drip

- With drop size reduced to 60 drops per ml for pediatric and critical therapy.
- Sharp piercing spike for easy insertion in fluid container along with built-in preventive bacterial air vent
- Provided with disc type fluid filter to filter any particulate matter in the I.V. fluid.
- Long super smooth kink resistant tubing with efficient roller controller for accurate and unrestricted flow.



Further option available:



Latex Free

DEHP Free

Product Code
I040020100

Primefusion Set™

I.V. Administration Set

(Premium infusion set with new features and enhanced quality)

- DEHP free material safe to be used in all kinds of patients without any associated complications.
- Sharp spike is provided for better penetration in all types of fluid containers.
- Y-Injection port made up of silicone provided for extra medication
- Vented set with 1.2µ air vent filter to ensure entry of contamination free air.
- Approximately 20 drops/ml.



Further option available:



Latex Free

DEHP Free

Product Code
I044050100 (Vented)
I046050100 (Non Vented)

Maistrol™

I.V. Set with Flow Regulator

- Designed to control flow rates from 5ml/hr-250 ml/hr
- Sharp & easy piercing air-vented spike with bacteria barrier incorporating snap cap.
- Y-Injection port made up of silicone provided for extra medication
- Smooth roller clamp for controlling flow rate.
- Approximately 20 drops/ml.
- Also available in DEHP Free materials.



Latex Free

Further option available:



Product Code : I050000100 (Vented)
I051000100 (Non Vented)

Blood Transfusion Set

with Airvent / without Airvent

- Sharp spike suitable for blood bags and all type of standard blood containers.
- Provided with a cylindrical drip chamber with 200µ filter to prevent passage of any blood clots, down the path.
- Flash ball type latex free injection port for extra medication.
- Comes with smooth 150 cm long, kink resistant tube.
- Approximately 20 drops/ml
- Also available in DEHP Free materials.



Latex Free

Further option available:



Product Code : I060010101 (110ml)
I060010102 (150ml)

Maisvol™

Measured Volume Set (M.V. Set)

- Micro drip with drop size of 60 drops per ml.
- Soft, flexible burette chamber suitable for most of the fluids.
- Hanger enables hanging to the I.V. stand.
- Floating auto shut off valve act as volume indicator and automatically shuts off the drain path to prevent air embolism.
- Contains flashball type injection site for extra medication.
- Roller type flow controller provides precise flow control.
- Sizes (ml) : 110 & 150, Also available in DEHP Free materials.



Latex Free

Product Code :
I123000200 (Single lumen)
I123000201 (Double lumen)
I123000202 (Triple lumen)

Extension Sets

Multi lumen Extension Sets

With Needle Free Connector / Injection Stopper

- Male luer connector at one end and female Needle free connector / Injection stopper other end.
- High quality kink resistant tube that provides smooth flow.
- Smooth internal surface to minimize variation of flow.
- Slide clamp for immediately stop the flow.
- Available : Single lumen, Double lumen, Triple lumen
- Length of tubes : 10-30cm
- Available in both Small bore and Large bore



Latex Free

Product Code :
I090010000

Maisflow™

I.V. Flow Regulator Extension Set

- Precise flow rate control of IV fluids with range of 5 to 250 ml/hr
- With "Y" injection port (latex or) for intermittent medication
- Also available with thumb support "Y" injection port and Needle free "Y"-Site
- Soft & kink resistant PVC tubing
- Standard tube length : 20 cm without "Y" site & 40 cm with "Y" site
- Tube dia : I Ø 3.0 mm, O Ø 4.1 mm



Product Code :
I0700207XX

UV Mais Protect Line™

High Pressure Extension Line with UV Protection

- All light sensitive drugs are protected due to light protection up to 520 nm.
- Translucent orange tube, Pressure proof up to 2 bar.
- Easier identification of light protected disposables because of characteristic orange color coding.
- The tube is made of PE (Polyethylene), PVC Free, DEHP Free & Latex Free.
- Small tube diameter (1.0 x 2.0 mm) to reduce residual volume.
- Low absorption characteristics for the use with high potent drugs.
- Excellent start-up characteristics, Latex Free & DEHP Free, Kink resistant.
- Available in different lengths (150 cm and 200 cm).



DEHP Free

Latex Free

Product Code :
I112000201

Needle Free Connector

Needle Free Connector / Needle Free Injection Stopper

- The housing is impregnated with PC which helps to lower infection.
- Smooth top can be effectively swabbed with standard, acceptable disinfection practice
- Straight-through fluid path helps improve the ability to flush
- Zero dead space helps prevent issues caused by blood clotting, difficulty in flushing fluid pathway or interactions with incompatible drugs
- Split septum valve technology



Product Code :
I19100XXXX

Elastomeric Infusion Pump

Disposable Infusion Pump

- Elastomeric Infusion pump for single-use for the infusion of cytostatics, antibiotics, analgesics, anaesthetics & more. The pump offers patients a very high mobility during treatment & is a safe & simple alternative to electronic devices.
- Simple application, function without external energy sources.
- Wide range of flow rates, filling volumes and special models. perfectly adapted to application needs.
- High delivery accuracy, Comfortable and discreet for the patient.
- Air & particle filter as well as kink-resistant infusion line ensure maximum safety.
- Enables outpatient treatment and early discharge cost-effective.
- Latex free & DEHP free
- Available in 50ml, 100ml, 250ml, 275ml, with PCA & without PCA



Product Code :
I0700000XX (High Pressure)
I0710000XX (High Pressure-S)

01-10cm
02-25cm
03-50cm
04-100cm
05-150cm
06-200cm

High Pressure Extension Line

Extension Line Low or High Pressure (Plain & Spiral)

- Transparent Extension Line (with colour coded stickers)
- 6% male & female luer locks.
- Kink resistant PVC tubing.
- Tube dia : Int : (1.0mm) Ext.(3.0mm) & pressure handling capacity : 800 psi
- Smooth internal surface to minimize variation of flow.
- Sizes (Plain) :25,50,100,150,200 cm
- Sizes (Spiral) :100,150,200,300,400 cm

Anaesthesia & Respiratory Care



Product Code :
A010010100 (ADULT)
A011010100 (CHILD)
A012010100 (INFANT)

Oxy Mais™

Oxygen Mask

- OXY-MAIS is designed for convenient oxygen therapy.
- Made from special non-toxic medical grade PVC.
- Two holes to allow carbon dioxide exhaled by the patient to escape.
- Nasal clip for secure fixation over the patient's nose.
- Elastic band for placement around the head.
- Star lumen tube with 200cm length.
- Sizes : Adult, Child, Infants.



Product Code :
A020010100 (ADULT)
A021010100 (CHILD)
A022010100 (INFANT)

Oxy Prong™

Twin Bore Nasal Oxygen Set

- Suitable for easy and efficient administration of oxygen.
- Star lumen main tube to avoid accidental blockage.
- Soft and kink resistant PVC. Tubing.
- Soft twin prong nasal tips to ensure equal distribution of oxygen through both air passages which provides maximum patient comfort.
- Tube length 200cm.
- Sizes : Adult, Child, Infants.



Product Code :
A030010100 (ADULT)
A031010100 (CHILD)
A032010100 (INFANT)

Mais Neb™

Nebuliser Mask

- Soft, clear aerosol mask with anatomical form is ideal for long term use.
- Transparent mask (with holes) made from non-toxic, medical grade PVC.
- Nebuliser chamber (6ml) to house the drug in liquid form with a funnel shaped vent to allow oxygen at high flows to convert the liquid drug into droplet form to reach the lungs.
- Soft, kink resistant, 200cms long non-collapsible extension tubing (Star Lumen) to be connected with the oxygen source.
- Sizes : Adult, Child, Infants.



Product Code :
A070000100

Catheter Mount

- Double swivel elbow connector with suction port and cap provides better flexibility, easy accessibility and provide comfort.
- 15 mm I.D./22 mm O.D. connector fits all tracheal tubes.
- 22 mm standard female connector is compatible with all breathing & ventilator circuits.



Product Code :
A120000100 (Adult)
A120000101 (Paediatric)

HME Filter

- The HME filter is used on patient breathing circuits to avoid the potential for any cross contamination between the patient and the machine.
- Dimensions: 77.0mm X Ø58.5mm
- Weight: 27.0gm (approx).
- Effective filtration area: 27.3cm²



Pencil Point



Quincke Point

Product Code :
A1500001XX (Quincke Point)
A1510001XX (Pencil Point)

Spinal Needle

- Suitable for Spinal anaesthesia.
- Conical tip imparts superior tactile feedback.
- High flow rate enables faster Cerebro Spinal Fluid (CSF) flashback.
- Aggressive anaesthetic distribution upon injection.
- Latex free & DEHP free.
- Available in Quincke Point & Pencil Point.
- Sizes: – 19 G to 27 G x 3.5”(90 mm) needle length.



Product Code :
A050010101 (Adult, single water trap)
A050010102 (Child, single water trap)
A051010101 (Adult, double water trap)
A051010102 (Child, double water trap)

VentiMais Circuit™

Breathing Circuit

- Available in Corrugated & Expandable tube.
- Types : Plain, Single Water Trap & Double Water Traps.
- Size : Adult & Child



Product Code :
A040010100

MaiSpirometer™

Lung Exerciser with Three Ball Model

- Innovative system to exercise respiration through inspiration.
- Specially designed with 3 stage chambers to provide more efficient exercise to patient at a step up basis.



Product Ref. No.		
Size	Plain	Cuffed
2.0	A091000100	-
2.5	A091000101	-
3.0	A091000102	-
3.5	A091000103	A090000103
4.0	A091000104	A090000104
4.5	A091000105	A090000105
5.0	A091000106	A090000106
5.5	A091000107	A090000107
6.0	A091000108	A090000108
6.5	A091000109	A090000109
7.0	A091000110	A090000110
7.5	A091000111	A090000111
8.0	A091000112	A090000112
8.5	A091000113	A090000113
9.0	A091000114	A090000114
9.5	A091000115	A090000115
10.0	A091000116	A090000116



Product Ref. No.		
Size	Plain	Cuffed
2.0	A097000100	-
2.5	A097000101	-
3.0	A097000102	-
3.5	A097000103	A092000103
4.0	A097000104	A092000104
4.5	A097000105	A092000105
5.0	A097000106	A092000106
5.5	A097000107	A092000107
6.0	A097000108	A092000108
6.5	A097000109	A092000109
7.0	A097000110	A092000110
7.5	A097000111	A092000111
8.0	A097000112	A092000112
8.5	A097000113	A092000113
9.0	A097000114	A092000114
9.5	A097000115	A092000115
10.0	A097000116	A092000116

Endotracheal Tube (Plain/Cuffed)

- Made from non-toxic, clear, transparent, thermoresistant medical grade PVC (Polyvinyl Chloride).
- High volume, low pressure, evenly shaped cuff with a pilot balloon integrated to the tube for secure positioning inside the trachea.
- Fitted with standard 15 mm connector for attachments to all standard ventilatory circuits in operation theaters or intensive care units.
- Graduated markings to display distance from the tip.
- Well marked to indicate the internal/external diameter.
- Nasoral tip suitable for both nasal and oral intubation.
- Full length radio-opaque lines to assess position of the tube radiographically.
- Murphy's eye near the tip to circumvent any obstruction.

Reinforced Endotracheal Tube

- Used to maintain a patent airway and mechanically ventilate patients.
- Made from non-toxic, non-irritant medical grade PVC.
- Uniform spiral metal-reinforced tube wall to prevent the tube from kinking.
- Reinforcement supports tube position and verification during X-ray.
- Accurate & safe positioning ensured by graduation marks & tip-to-tip radiopaque line.
- High volume / low pressure cuff ensures efficient low pressure cuff seal (For cuffed tubes).
- Universal 15 mm connector at proximal end.
- Recommended use of bite block / Guedel airway.
- E.T.O sterile and pyrogen free. For single patient use.

Endoscopic

Mais Ligation Clips

Endoscopic Ligation Clips (Titanium)

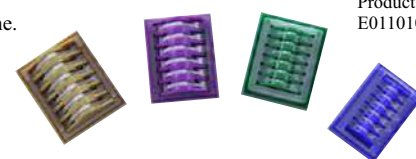
- Mais Ligation Clips are Sterile, single-patient-use clips manufactured from high quality titanium.
- The V-shaped clip designed for ligation of tubular structures.
- Supplied sterile and are used for ligation of organs and vessels in laparoscopic as well as open surgery.
- Applicators are available in a wide variety of jaw types and Applicator lengths.
- Pure Titanium providing maximum vessel occlusion and zero memory preventing tip opening after application.
- Biologically inert radiolucent and non-magnetic for use with MRI scanning equipment.
- Open Applicators colour coded for ease of identification 45cm Endoscopic Applicators for Bariatric surgery offering extended reach

Endoscopic Ligation Clips (Polymer)

- Ligation Clips are made of non-absorbable polymer, inert, non-toxic & well tolerated by the body, highly resistant in time.
- Integrated teeth to ensure greater stability and prevent slippage on the tissue.
- Distinct tactile feedback confirms jaw seating and secure vessel placement.
- Applicators for open and endoscopic surgery equipped with precision anchoring system that allows clips to remain stable without risk of accidental loss.
- Non-Absorbable polymer is inert, nonconductive, radiolucent and does not interfere with CT, MRI, or X-ray diagnostics.



Product Code :
E0100101XX



Product Code :
E0110101XX

Surgery & Drainage System



Standard Tip Crown Tip

Product Code :
S0100001XX (Standard Tip)
S0110001XX (Crown Tip)

Yankauer Suction Set

Yankauer Handle with Connecting Tube

- Moulded Yankauer suction handle with flexible kink resistant tube.
- Used for removal of secretions and blood peri-operatively by providing unobstructed suction during prolonged use.
- Soft flexible adaptors at both ends of the tube provide safe grip to the handle as well as suction source.
- Suitable for use with or without vent control facility.
- Vent port is closed with tight fit sleeve, which can be removed by small incision to shift to vent control system.
- Tube Length 250 cm (2.5 meter).
- Available in Standard Tip & Crown Tip.



Product Code :
S020010100

Maiskin Stapler

Skin Stapler

- Simple and reasonable design, easy to operate. Staples are made of High Quality Stainless Steel for medical use.
- High sewing up and stapling speed help to shorten the time of sewing and avoid the cross infection of many contagious diseases.
- Angled head design provides a clear view to ensure precise staple placement also angle head design helps the staple to enter easily into the tissues.
- Painless & convenient while removing staples after the operation incision healed up.
- Stapler handle design gives good texture to the product and provides good comfort to the surgeons hand.
- Lesser Trauma to the patients • Better cosmetic effect

Urology

FOLEDRAIN™

Foley Balloon Catheter

- Used for short/long term urine drainage.
- Made up of latex bonded with silicone elastomer which eliminates the risk of encrustation.
- Distal end is coned, smooth, and burr free eyes for a traumatic intubation.
- Provided with symmetrical large capacity balloon that ensures straight tip for proper urine flow and good sphincter action, preventing bladder leakage.
- High strength polymer layer in the middle of the catheter ensures wider inner diameter & hence high flow rate.
- Smooth eye, ultra thin highly elastic balloon & hard non-return valve for trouble free inflation and deflation
- Valve is colour coded for instant size identification.



Specifications

Type	Ch/FR	Colour	Outer Dia (mm) ±0.33mm	Capacity of balloon (ml)	Total Length (mm) Minimum	Flow Rate (ml/min.) Minimum	Product Ref. No.
2-Way (Pediatrics)	6	Blue	2.0	1.5-3	220	10	U031030106
	8	Black	2.7	3-5	220	15	U031030108
	10	Grey	3.3		220	30	U031030110
2-Way (Adult)	12	White	4.0	5-15	360	50	U031030112
	14	Green	4.7	15-30	360	70	U031030114
	16	Orange	5.3		360	100	U031030116
	18	Red	6.0		360	100	U031030118
	20	Yellow	6.7		360	100	U031030120
	22	Purple	7.3		360	100	U031030122
	24	Sky Blue	8.0		360	100	U031030124
	26	Pink	8.7		360	100	U031030126
	28	Brown	9.7		360	100	U031030128
	30	Grey	10		360	100	U031030130
3-Way (Adult)	16	Orange	5.3	30-50	360	100	U032030116
	18	Red	6.0		360	100	U032030118
	20	Yellow	6.7		360	100	U032030120
	22	Purple	7.3		360	100	U032030122
	24	Sky Blue	8.0		360	100	U032030124
	26	Pink	8.7		360	100	U032030126
	28	Brown	9.7		360	100	U032030128
	30	Grey	10		360	100	U032030130

Renal Care

Dilys Cath

Hemodialysis Catheter

Features

1. Flexible polyurethane material
2. Rotatable suture hub
3. Dilator with gradually varied O.D
- 4 Anti Kink, Leakage Proof, Sterile, individually packed

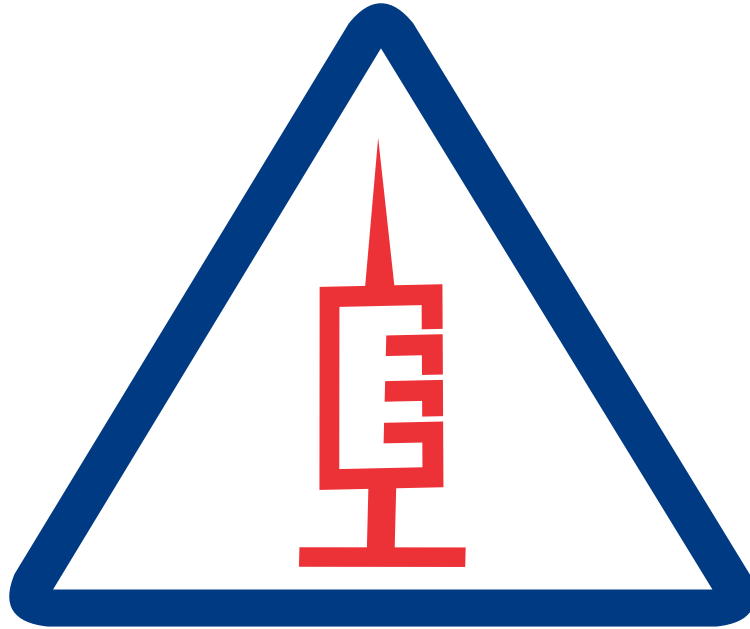
Kit Contents

- Radio-opaque polyurethane Hemodialysis catheter
- J/St tip ninitol guide wire with advancer & extra soft tip
- Disposable Syringe 5ml with extra clear visibility
- Guiding Syringes 5ml allows insertion through syringe plunger
- Injection Caps • Drape Sheet
- Easy to use 11# scalpel blade
- Introducer needle that offers Quick & smooth insertion
- Long tapered tip dilator with stopper to avoid over insertion
- Surgical Suture • Patient ID card



Specifications

Type	Size	Product Code
Double Lumen (Curved)	11.5Fr x 13cm	R021010209
Double Lumen (Straight)	11.5Fr x 15cm	R021010110
Triple Lumen (Curved)	12Fr x 13cm	R022010212
Triple Lumen (Straight)	12Fr x 15cm	R022010113



A SYSMECH - MAIS JOINT VENTURE

Mais India

The health care specialist

MAIS INDIA MEDICAL DEVICES PVT. LTD.

525-P, Sector-37, Pace City-II, Gurgaon, Haryana-122001, India.

Tel.: +91 124 404 7533

info@maisindia.com

Mob.: +91 8448822362

director@maisindia.in

www.maisindia.com